

# The Mouthpiece

Culham's Newsletter

**February 2023**



## Dates for your Diary

|             |         |                                     |                   |
|-------------|---------|-------------------------------------|-------------------|
| Fri 3 Feb   | 8pm     | Ladies of Culham<br>Pot Luck Dinner | St Paul's Church  |
| Sun 5 Feb   | 11am    | Family Holy Communion               | St. Paul's Church |
| Sun 12 Feb  | 11am    | Holy Communion                      | St. Paul's Church |
| Tues 14 Feb | 7.30pm  | Parish Council Meeting              | St. Paul's Church |
| Sun 19 Feb  | 10.30am | <b>Pancakes in the Church</b>       | St. Paul's Church |
| Sun 26 Feb  | 11am    | <b>Messy Church</b>                 | St. Paul's Church |

## **Talking point by Revd Jennifer Morton and the Dorchester Team Clergy**

The last time I wrote a reflection for our magazines for February was in 2020. Little did we know what that year would bring just a few short weeks later. Not only for 2020 but also the following two years. What will 2023 bring?

Three years on has our view of the world changed. We are coming to terms with the aftermath of the pandemic and the effect it has had on all of us. However, February is still the month when at long last days are getting longer. Even though we are still faced with difficult times as winter is not yet gone can we greet the spring in a more optimistic frame of mind.

Those of us who are older have seen many changes over our lifetime and the previous generation even more. My aunt, the last of that generation in our family, recently died aged 91 and like our friend Olive Garfoot who also died in December, she had lived through a war and many economic and political ups and downs. It is the nature of our world and our place in it.

*'For everything there is a season, and a time for every matter under heaven.'* the writer of Ecclesiastes tells us. Thousands of years later we know that still to be true. I look out of my window as I write this on a gloomy morning in early January and can hope that the birds coming to feed will once again raise young. The trees and plants are already beginning to stir. The new season is promised.

We in the Church also follow seasons during the year. We began by preparing for Christmas, the time when we remember again the birth of the Christ child and now, as the Christmas season once again draws to a close, we turn our attention to the promises of God in the teachings of Jesus the man. The promises of a new season to come, one that is not only for the future but also for now in this world, if only we learnt how to live in a way that treated each other and creation with respect and justice; love and compassion.

The sun has just broken through the gloom, and I am reminded of the hope that however dark and thick the clouds, the sun is always there, just waiting to shine.  
May the sunshine in your lives now and for each of the seasons to come.

### **Team Services**

#### **Mon 13<sup>th</sup> Feb 7.30pm Licensing and Induction or Revd Jane Willis as Team Rector in the Abbey**

We are delighted to welcome the Revd Jane Willis as the new Team Rector for the Dorchester Team. Jane will be based at Dorchester Abbey and with her husband Gerry moved into the Dorchester Rectory in January. Jane will be licensed on Monday 13<sup>th</sup> February 2023, at 7.30 p.m. at the Abbey by the Bishop of Dorchester. Everyone is welcome to this service and to stay behind

afterwards to say hello to Jane and Gerry. Please reply to the Abbey office [admin@dorchester-abbey.org.uk](mailto:admin@dorchester-abbey.org.uk) or 01865 340007 if you are able to come.

## **Lent**

Lent leaflets for the Dorchester Team will be available in the team churches and details will be on the Dorchester Abbey website [www.dorchester-abbey.org.uk](http://www.dorchester-abbey.org.uk). There will be Lent courses, lunches as well as Compline and Meditations. "Come and See" Diocesan Lent Course exploring the sayings of Jesus in the Beatitudes, on Monday evenings at 7.30pm in Dorchester, starts on 27th February. Everyone is welcome! The course will be hosted by Sue and Malcolm Lucas. Please call 01865 341502 for venue and more details or email [dorchesterteamcurate@gmail.com](mailto:dorchesterteamcurate@gmail.com). The Closeness of God Art and Inspiration in Lent will run Wednesdays at 2pm and 7pm in Berinsfield Church and will start on Wednesday 1<sup>st</sup> March. Please contact Rev Teresa [revteresa@outlook.com](mailto:revteresa@outlook.com) for details.

**Ash Wednesday Wed 22<sup>nd</sup> Feb Eucharist with Imposition of Ashes** Begin your Lenten journey with an act of Remembrance and a commitment to follow Jesus **9.30am at Berinsfield Church and 7.00pm at Dorchester Abbey**

**Sun 26<sup>th</sup> Feb 11.00am Team Service at Berinsfield**

**Mon 27<sup>th</sup> Feb 2.00pm Dorchester Abbey** Thanksgiving Service for the life of Mary Braybrooke

## **Team Events**

### **Events in the Abbey**

**Sat 4<sup>th</sup> Feb 7pm Thames Consort – Tudors and More** – directed by Jeremy Bougton with Sharon Warnes, violin. Vocal and Instrumental music of Tallis, Boyd, Fayrfax, Phillips, Parsons, Corelli, Sweelink, Blitheman and Morley. Tickets £16 (£12) under 16 free from <https://www.dorchester-abbey.org.uk/whats-on/> All profits to support the Abbey.

**Sat 11<sup>th</sup> Feb OSJ 7pm 150<sup>th</sup> Tribute to Vaughan Williams** Marking 150 years since the birth of one of Britain's most beloved composers, this joyous concert features some of Vaughan Williams lesser known gems, alongside staples of the English classical repertoire. Bringing to life the Lark Ascending is the exceptional teenage violinist Poppy McGhee, a multi award-winning star of the future. She is joined by OSJ Voices for this evening of celebration, music and song. Tickets £5 to £25 from [www.osj.org.uk](http://www.osj.org.uk)

# Village News

Village website: [www.culhamvillage.org.uk](http://www.culhamvillage.org.uk)

## **YOUR COMMUNITY NEEDS YOU**

The Mouthpiece Team are looking for a Distribution Coordinator and two additional distribution deliverers.

One distributor is required for the A415, Colmoor Farm, Tollgate Cottage and The Burycroft.

Another distributor is needed for Culham No1 Site, The Railway Inn and Cottages, Zouch Farm and Coppers End.

You will be joining a team who deliver monthly a copy of  
The Mouthpiece to each dwelling in Culham.

If you are interested and/or want more information before volunteering please contact Anne Churchill Stone, contact details as the Who is Who in Culham at the back of The Mouthpiece.

## **Culham Recreation Ground Finally Has New Play Equipment!**



After years of grant applications and investigation by various teams within the village, we finally have a brand-new playground on the Recreation Ground. With two sets of swings, a zip wire, climbing frame, two slides and a new seesaw to complement the one that is still there from the old playground, this is certainly an upgrade on the rather sad looking remnants of the previous playground.

The best thing is that it's not only for children, either! Fitness fanatics, or those just wanting to build up a bit of strength, can use the adult fitness equipment that has been installed at the far end of the Recreation Ground for just this purpose. There is a skiing



machine and a rowing machine amongst others and users can scan a QR code to access training suggestions and ways to make the most out of the equipment.



Grants were received from South Oxfordshire District Council, the FCC Communities Foundation and Culham Parish Council. FCC Communities Foundation is a not-for-profit business that awards grants for community projects through the Landfill Communities Fund. The generosity of these three funders has provided a space where children and adults from Culham and the surrounding villages will be able to meet, exercise and play for many years to come.



# LADIES OF CULHAM

## Next Dates:

- 3<sup>rd</sup> Feb – Pot Luck Dinner.
- 3<sup>rd</sup> March – Wine Tasting
- 5<sup>th</sup> May – Mindfulness Session
- 9<sup>th</sup> June (later date due to half term holiday) – Floral Crown Making

All meetings are at St Paul's Church,  
Culham. Questions? Email  
[ladiesofculham@gmail.com](mailto:ladiesofculham@gmail.com)



# ART of CULHAM

**SATURDAY 17 JUNE 2023 • 10AM - 4PM**  
**ST. PAULS CHURCH, CULHAM, OX14 4LZ**



## **CALLING ALL ARTISTS OF CULHAM...**

**We are holding another Art Of Culham exhibition in St.Pauls Church and are looking for up to 15 local artists to exhibit.**

**If you would like to enter please email your name, address and three photos of your art, (jpgs at 300dpi 5"x7") stating your medium to:- [artofculham@gmail.com](mailto:artofculham@gmail.com) by Feb 14th 2023.**

**There is limited space but we will try to accommodate as many artists as possible.**

**We also require several artists to run some children activities during the day. So if you have an idea that could fill a one or two hour activity eg. Painting/Sketching on ipads/Mosaic/Clay/Modelmaking/MonoPrinting etc. please let us have more details.**

**Thanks from Tasha & Roy**



# **Culham Parish Council (CPC) Notes – February 2023 Meeting.**

Notes not available at the time of going to press

## **Next meeting**

Tuesday 14<sup>th</sup> February 2023 at 7:30pm – to be held in St Paul's Church.

As ever all villagers are welcome to attend - please come along even if you have no specific items to present/discuss.

The CPC website address: <https://www.culham-pc.gov.uk/>

## **Culham Parish Council - 6 Vacancies for Parish Councillors**

### **Could you give some of your time to help run the parish and make improvements?**

In May 2023 there will be elections for all the councillors of the Parish Council.

To be eligible to apply to be a councillor you need to be over 18, preferably a resident of the Parish of Culham and be on the electoral roll (although exceptions do apply).

As part of the Parish Council, you will have responsibility on deciding how much to raise through the council tax, influencing and shaping the long-term development policy for the Parish and as part of the Planning process comment on planning applications in the Parish. The main meetings are held once a month, in the evenings.

If you are interested in local issues and matters that affect Culham and wish to improve the quality of life and the environment in the local area then please consider standing as a candidate for the Parish Council. Not all the existing councillors will be standing as they have served for many years!

In recent memory, no parish councillor election has been contested and all have been elected unopposed.

To find out more, speak to one of the existing councillors - details on the back of The Mouthpiece

## **District Councillor Report Jan-Feb 2023 Cllr Sam Casey-Rerhaye**

As we move into the New Year, I'd like to look back on some of the decisions made towards the end of 2022 that will have a positive impact on the residents of South Oxfordshire, reflecting the priorities we set out when we took over the administration back in 2019.

A new **Housing Delivery Strategy and Action Plan** has been adopted to help residents on lower incomes access safe and secure affordable housing. This will enable the Council to build its own homes for social rent and will also help us to tackle the climate emergency to reduce carbon emissions by encouraging developers to use sustainable materials while building well-designed energy efficient housing. It also aims to encourage housing providers and residents to access grant funding to help retrofit their homes to reduce their carbon footprint. In December a further £2m was allocated to this programme, putting those CIL payments to good use.

We formally adopted a revised **Community Infrastructure Levy (CIL) Charging Schedule**, which came into effect on 3 January. This will increase significantly the amount of money developers are



required to pay on new developments and introduces a levy for developments including student housing, build-to-rent housing and elderly person's accommodation, all of which are currently exempt from charges. This is a really positive development as it will ensure we make progress toward bridging the large community infrastructure gap we have in the district. Examples of community infrastructure include playgrounds, leisure facilities, zebra crossings etc. Parishes with adopted Neighbourhood Plans can also expect their CIL receipts to increase significantly since they are allocated 25% of all CIL contributions.

The Council has produced a useful guide to help residents struggling with the rising **Cost of Living**, which is available on the Council's website ([www.southoxon.gov.uk](http://www.southoxon.gov.uk)). Anyone experiencing hardship should contact our continuing Community Hub where officers can guide residents to the support that's available: **01235 422 600** or [communitysupport@southandvale.gov.uk](mailto:communitysupport@southandvale.gov.uk).

We opened a third round of the **Household Support Fund** in January to support households who can't afford essentials over the winter months. Support will be tailored to individual needs but will focus on food and fuel vouchers. Details of eligibility will be published on our Cost of Living website pages mentioned above.

The Council's **webpages on action on climate change** for organisations and individuals, as well as giving an update on what the Council itself is doing, are continually updated. We have added some information on 'retrofitting' your home for energy and carbon saving (I prefer the term 'future fitting!'), see here - <https://www.southoxon.gov.uk/south-oxfordshire-district-council/tackling-the-climate-emergency/what-can-you-do/retrofitting-your-home/>

The Council -funded **CCTV** operators have helped support nearly 100 arrests across South and Vale districts in the past six months. Our most recent CCTV report gives information on how we've contributed to tackling crime and helping safeguard vulnerable people in our town centres. Operators working across Didcot, Henley, Thame and Wallingford supported 363 incidents, gave 47 evidence packs for potential court proceedings and supported 42 arrests.

### **Coming in 2023 – Voter ID**

A new law passed in 2022 requires all those casting votes in local and national elections to show some form of photo identification at the polling station. This law was passed despite there being virtually no voter fraud in the UK, and the acceptable forms of ID seem designed to make it difficult for younger citizens to cast their vote. We passed a motion condemning this new law, but we have to implement it. This change will affect all voters at the next local elections on **4<sup>th</sup> May 2023**, so make sure you don't lose your democratic right to vote by ensuring you have an acceptable form of ID or by registering for a postal vote. **Look out for more details as the elections approach.**

### **Culham Science Centre**

As I am sure you have noticed, new buildings are going up at a fast pace now in the Centre. I have been pushing hard with the Director of the Science Centre, the County Council and the developers to ensure the developments are more sustainable in their build, reduce the number of parking spaces over time and improve the travel plan for employees working there to rely less on cars and more on public transport. The plans that come before the planning committee now are much more focused carbon-saving, have solar panels and other more sustainable features than those of only a few years ago. The very large new fusion building, 38mx50m, was given planning permission by the Planning Committee on January 11<sup>th</sup>. I voted to refuse permission on the basis it was against our own District policy that it would have an unacceptable visual impact, but I was in a minority.

[Sam.casey-rerhaye@southoxon.gov.uk](mailto:Sam.casey-rerhaye@southoxon.gov.uk) ; 01235 635566

# County Councillor's Report January 2023 – Cllr Robin Bennett

[Robin.bennett@Oxfordshire.gov.uk](mailto:Robin.bennett@Oxfordshire.gov.uk)

**Reduced bus fares:** For 3 months (Jan-Mar), bus passengers can enjoy a £2 cap on bus fares. Paid for by a government scheme, fares with participating bus firms will cost a maximum of £2 per adult single fare (includes Oxford Bus Company and Thames Travel). Concessions are unaffected.

**Anti-sewage motion passes and water summit:** A motion at Full Council in December condemned the practice of dumping sewage into waterways. Over the Christmas period, Thames Water released raw sewage multiple times into Oxfordshire rivers. A 'water summit' in December also looked at challenges facing water supply in Oxfordshire.

**Rainfall and Oxfordshire's river levels:** There are several flood alerts on Oxfordshire watercourses. Residents can monitor the situation in their local area on our news page, which signposts key information from the Environment Agency and Met Office.  
<https://news.oxfordshire.gov.uk/rainfall-and-oxfordshires-river-levels/>

**Tackling carbon emissions:** OCC has reported on its carbon reduction plan. The council reports data from its own operational emissions (those included in our Net Zero by 2030 target), as well as a range of other data sources including maintained schools and some contractor emissions. The council intends to expand the range of emissions included in its reporting in future reports, particularly major suppliers.

There was an overall reduction of 11% since 2019/20 (Pre covid). This equates to an average reduction of 5.5% annually in the last two years and 74.6% reduction compared to 2010/11.

Over 75% of the 60,000+ street lighting assets in OCC control are now run with energy saving LED lights. Streetlighting is the largest source of carbon emissions in OCC's operations and is a growing cost due to rising energy prices. It's estimated this will save the council £77m over 20 years.

**Tree planting:** As part of the new Tree Policy for Oxfordshire, 450 trees are being planted on highways over the winter period.

**Successful bid for children's homes:** OCC has successfully bid for a £5.2m grant to part fund four new residential children's homes. The homes will provide accommodation and support for children requiring solo provision or who can only share with one other child, children with autism, and children who have had adverse childhood experiences.

**Special Educational Needs:** Families with children and young people with learning disabilities and special educational needs now have access to a refreshed website, designed to ease the process of transitioning into adult social services. The new Moving into Adulthood online handbook has been commissioned by OCC and has been developed by Oxfordshire Family Support Network in collaboration with parents and guardians who have had lived experience of children moving from children's services into adult's services. <https://news.oxfordshire.gov.uk/digital-guide-putting-families-in-control/>

**Minerals and waste:** OCC Cabinet agreed on 20<sup>th</sup> Dec [to start a new plan](#) to replace the current one which runs to 2031, in order to ensure the council has up-to-date plans for both minerals and waste, rather than continue current 2-part process. I'll be making sure local parishes are fully informed on the next steps.

**New Chief Executive:** Dr Martin Reeves has been appointed OCC's new full time chief executive. He joins from Coventry council shortly.

# Other News



SUTTON COURTENAY WI



**Here's an invitation**

**- to join us for our 2023 meetings -**

**In February a talk on RNLI - Past & Present**

**Our Annual Meeting for members is in March**

**A social evening & quiz in April and more events**

**and trips planned for the coming year**

**Come and see, enjoy, join in!**

**We meet every third Tuesday monthly in the**

**River Room, Sutton Courtenay at 7.30 pm**

**For details contact our Secretary on 01235 847612**



## **Time To Get Walking Again!**

With Spring on its way we start to think about getting out to walk in the beautiful English Countryside again, but where to find new and interesting walks?

Walking in Oxfordshire <https://www.walkinginengland.co.uk/oxfordshire> has loads of walks to download and print, free, it also has books of walks, details of all the walking groups in the county and much more.

Whether you want to walk on your own or with a group all the information is there in one place.



John Harris (who maintains the website) said 'There is so much walking information on the web but it is difficult to find. Walking in Oxfordshire (part of the Walking in England website) has brought it together in one place so whether you are walking from home, or away on holiday, you will be able to find a walk suitable for you'.

With walks from half a mile to twelve miles plus long, and a note of suitability for pushchairs and wheelchairs, everyone can find a walk to enjoy.

So home or away, check out the websites and get walking!

John Harris

[www.walkinginengland.co.uk](http://www.walkinginengland.co.uk)

[john@walkinginengland.co.uk](mailto:john@walkinginengland.co.uk)



## **Update on OCLT's Crofts Court Community Share Offer We've reached the halfway mark! Help us with the next 50%**

Oxfordshire Community Land Trust (OCLT) is excited and proud to announce that its Community Share Offer has, in just 9 weeks, managed to raise over half its target investment. There is still time to invest and we really need your help to reach this challenging target.

Another exciting development is that the homes have been advertised on Vale's Homechoice website and we are looking forward to meeting prospective tenants, interviewing them and getting started on the training over the coming months.

The building is going well and the roof went on before Christmas. Still on schedule to move in around June and once residents have settled in, we hope to welcome as many of you as possible as members and investors to come and see for yourselves how community-led housing can really be of benefit.



As a reminder, Crofts Court in Dean Court, Cumnor Parish just west of Oxford is OCLT's first development that will provide 8 much needed community-led affordable homes for those on the Vale of White Horse Housing List and with a strong local connection. It is fully funded, with grant of £904,000 from the Vale of White Horse BC and Future Oxfordshire Partnership, and a variable rate mortgage of £1.1m from Ecology Building Society.

Through Community Shares, with a forecast 3% return, stakeholders will help OCLT guard against future increasing interest rates, and will allow OCLT to generate a small income stream from the rents at an earlier date, and start bringing a second site forward. Oxford is the second least affordable city in the country and these homes are desperately needed. Rents will be no higher than the Local Housing Allowance so those on housing support will be able to afford them. The homes will also be asset locked, so they cannot be purchased.

This is an opportunity for social investors and organisations to step in and take a stake in fairer, more sustainable housing for Oxfordshire, and to demonstrate that this form of community housing can be scaled up across the country! The trust is offering Community Shares at a value of £1, offered in multiples of 250, with a minimum investment of £250 and a maximum of £50,000. The Community Shares will carry a target maximum interest rate of 3%. We aim to raise £500,000 by 28 February 2023. For more information including our Community Share Offer brochure and Business Plan, please visit [www.ethex.org.uk/invest/OCLT](http://www.ethex.org.uk/invest/OCLT)



## Diverse, personal collection of WW2 art to go on display at Soldiers of Oxfordshire Museum, Woodstock

- **The *Art of World War II: A Personal Collection* will go on show from 25 February to 7 May 2023**
- **Featuring original artwork produced during, and depicting, the Second World War**
- **A diverse range of styles and subjects, from well known and lesser-known artists**
- **Exhibition to tour following first show at SOFO Museum**

An exhibition of diverse, original artwork, all produced during, and depicting scenes from the Second World War, will go on display at the Soldiers of Oxfordshire Museum, Woodstock, from 25<sup>th</sup> February to 7<sup>th</sup> May 2023.

The exhibition first went on display at the museum in March 2020, but was open for less than a week before national lockdowns were put in place in response to the COVID-19 pandemic - meaning many will now get the opportunity to see these historic pieces for the first time.

*The Art of World War II* exhibition has been curated from John Noott's personal collection of artwork, gathered together during his career as an art collector and dealer for over 40 years. Drawn together, the art forms a history in pictures of the Second World War while showcasing incredibly

personal perspectives which reflect a varied range of experiences before, during, and after the conflict. Through the work of artists of the time, visitors will see the war unfold 'as it happened'.

Visitors to the exhibition will be able to see a view of Dunkirk as troops are evacuated, painted by a nephew of Winston Churchill, John Spencer Churchill, a reflection of what he had witnessed during his own army service. The artist would return to England to inform his uncle personally of the need for boats to assist in rescuing the troops there.

Elsewhere, the plight of both evacuees and refugees is seen as artists of the time depict the many people displaced by war, such as those coming to Britain as part of the *Kindertransport* rescue programme in the build up to the Second World War.

The artists whose work is included in the collection range from skilled amateurs to professionals, from those already renowned at the time to those who would go on to make a name for themselves in a post-war world. A sketch by Eduardo Paolozzi, better known as a pioneering pop-artist, contrasts newly arrived American troops with a typical Oxford scene of a student cycling through the city with the famous skyline as a backdrop. The artist faced discrimination and later internment under the Enemy Aliens Act, along with many of his family, when they moved to Britain from Italy.

The exhibition also features art from *Vogue* fashion illustrators forced to flee Paris, and *Beano* cartoonists that turned their hand to cartography to aid General Montgomery in North Africa.

Collector John Noott also knows how wide-reaching the impact of the war was on a personal level, having grown up in wartime Britain. He was seven years old in 1939, and remembers clearly many nights in air raid shelters and his father's service with the Local Defence Volunteers after work (later to become the Home Guard, or 'Dad's Army'). These lived experiences inspired him to gather the collection throughout his own career. Following this first exhibition since the pandemic, John will make the collection available to hire for exhibition at museums and venues around the country as we approach the 80th anniversary of the end of WW2.

The Soldiers of Oxfordshire Museum is open from Tuesday-Saturday 11am-5pm and Sunday 2pm-5pm. The county's own military history museum is located in the gardens of the Oxfordshire Museum, Park Street, Woodstock, on the doorstep of Blenheim palace.





# Mouthpiece

Please note that any opinions expressed in this newsletter are those of the contributors and not necessarily those of the editors. We accept contributions and advertisements in good faith and cannot be responsible for errors therein.

Please send contributions for the **March 2023 issue** of The Mouthpiece **by February 15<sup>th</sup>** to: [generalmouthpiece@gmail.com](mailto:generalmouthpiece@gmail.com)

|   |                        |
|---|------------------------|
| Anne Churchill Stone<br><i>Editing Jul/Aug, Oct, Dec/Jan, Mar, May issues</i> | 21 High Street Culham  |
| Gordon & Joan Gibbs<br><i>Editing Jun, Sep, Nov, Feb, Apr issues</i>          | 32 High Street, Culham |

The Mouthpiece is printed by  
Culham Publication Services, Culham Science Centre, OX14 3DB

YOUR LOCAL **CREATIVE** STUDIO  
FULL SERVICE



## ADDRESS

Stuart Morris, K1-0-65  
Culham Science Centre,  
Abingdon, Oxfordshire,  
OX14 3DB

## CONTACT

t: +44 (0)1235 464904  
t: +44 (0)1235 464423  
e: [printservices@ukaea.uk](mailto:printservices@ukaea.uk)  
w: [www.culhamstudio.co.uk](http://www.culhamstudio.co.uk)

## SOCIAL

 Culham Studio  
 @culhamstudio

## Local Services Directory

|  |  |   |
|--|--|---|
| <p><b>Larkmead</b><br/>VETS</p> <p><i>Caring for Pets, Horses &amp; Farm Animal<br/>throughout South Oxfordshire</i></p> <p><b>Didcot &amp; Sutton Courtenay 01235 814991</b><br/><b>Cholsey &amp; Benson 01491 651379</b><br/><b>Horses &amp; Farm Animals 01491 651379</b></p> <p><a href="http://www.larkmead.co.uk">www.larkmead.co.uk</a></p>  | <p>Excellent operating facilities, including orthopaedic surgery. Extended surgeries, and regular Cat Only clinics available.</p> <p>Appointments available Saturday and Sunday.</p> <p>24-hr emergency care, 365 days a year.</p> <p>Larkmead Vets cover all emergencies; we do not use outside agencies.</p> |  |
|--|--|---|

### Milton Garden Machinery Ltd

**Don't Mown at the Mower!**  
Garden machinery winter servicing  
**Please call or Email for a quotation.**  
Established for over 30 years.

We repair all types of petrol driven machinery.  
Main dealers for: Alko, Briggs Stratton, Countax, Cub Cadet, Echo, Efco, Hayter, Lawnflite, Mitox, MTD, Murray, Toro, Westwood, Wheelhorse. We repair Stihl and Honda machines too

15% discount in Oct – Nov, 10% discount in Dec, 5% discount in Jan on all parts and labour.  
Collection & Delivery Service available

Windyridge Farm, Milton Road,  
Abingdon OX14 4EZ  
Tel: 01235 555115  
Email:  
[paul@miltongardenmachinery.co.uk](mailto:paul@miltongardenmachinery.co.uk)  
[www.miltongardenmachinery.co.uk](http://www.miltongardenmachinery.co.uk)



### Bouncy Castle

Available for hire  
£40 per day/ £65 per weekend  
(Hirer to collect and return to Culham)

Contact Roy Epps [stpaulsandculhamvillage@gmail.com](mailto:stpaulsandculhamvillage@gmail.com)





# CHANGES

unisex hair salon

open Tuesday - Saturday

late nights Wednesday & Friday

open all day Saturday

discount for senior citizens Tuesday & Wednesday

free off road parking

For a professional but friendly service phone

01235848453 or call in and see us at

8 Milton Road, Sutton Courtenay

## Shaun Guard TV & WIFI SERVICES

- Aerials - supplied, repaired & poor reception solved
- Satellite - Sky Q dish upgrades, discreet dish installations
- Internet / WiFi - black pots cured, internal & external data cables installed
- TVs - hung on your wall or set up and tuned

OXFORD AERIALS

www.oxfordaerials.co.uk shaun@oxfordaerials.co.uk

Call Abingdon 01235 239622

## Cupcake Baker

Reasons to be cheerful!

Cupcakes, French macarons and celebration cakes.

Weddings, birthdays, parties and corporate orders.

www.cupcakebaker.co.uk mail@cupcakebaker.co.uk

6 High Street, Culham. 01235 533370

Supplier to Raymond Blanc's Two Michelin Star restaurant and hotel *Belmond Le Manoir aux Quat' Saisons*.



Richard Mathews Florist

01235 847 194

Order online via our new website

www.richardmathewsflorist.co.uk



# MOSSINATOR®

## ROOF CLEANING SYSTEMS

- Moss Removal
- Roof Cleaning
- Softwashing
- Patio & Driveway Cleaning

Contact Jake

07971 669 751

info@mossinator.co.uk

www.mossinator.co.uk





**Tonks Brothers Funeral Directors**  
**ABINGDON & KENNINGTON**

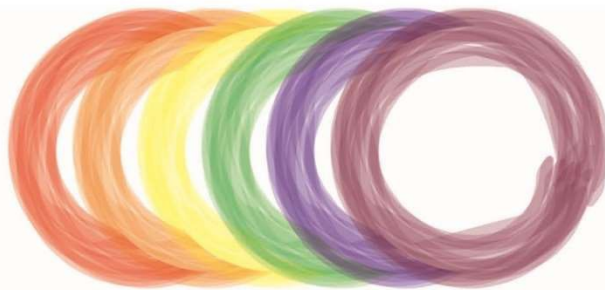
*158 Ock Street, Abingdon OX14 5DT Tel  
01235 539444*

*166 Kennington Rd, Kennington OX1 5PG Tel  
01865 736144*

[www.tonksbrothers.com](http://www.tonksbrothers.com)

*“Proud to be a family business”*

**VALE**



**CURTAINS & BLINDS**

**Bespoke Made to Measure**

**Free Expert Advice**

**Friendly Family run Business**

**Call: 01235 758010**

Email: [enquiries@valecurtainsandblinds.co.uk](mailto:enquiries@valecurtainsandblinds.co.uk)

[www.abingdonblinds.co.uk](http://www.abingdonblinds.co.uk)



**Culham**  
Garden Services

Local, Reliable and Professional

Available for all aspects of garden maintenance and clearance

Seasoned logs and kindling for sale

**07857383069**

James@culhamgardenservices.co.uk

Regular and one-off services available

Public Liability Insured Lawn treatment service

James Rockall  
13 High Street  
Culham  
OX14 4NB

### The Oxford Window Repair Company

The wooden window specialists

- Flaking paint and cracked putty on your windows?

We specialise in repair and renovation to give your windows a new lease of life!

We use the latest wood treatments and high-performance fillers, combined with modern & traditional paint solutions to give an excellent finish

Maintenance contracts are also available for your peace of mind

- All work guaranteed

Call us for your free estimate 07880 560 403

[www.oxfordwindowrepair.com](http://www.oxfordwindowrepair.com)

### DIRTY CARPETS, UPHOLSTERY, RUGS



Most carpets dry within the hour  
Unbeatable results, removes almost all spots & stains

**GRIMEBUSTERS**

**OXFORD**  
**ABINGDON**  
**WITNEY**

**01865 726983**  
**01235 555533**  
**01993 868924**

**[www.grimebusters.co.uk](http://www.grimebusters.co.uk)**

### A.L.VICKERY AND SON

Hardware and much more!

**Keys Cut while you wait,  
cookshop, housewares,  
tools, gardening...**

...you'll save money, time  
and mileage when you try

*Vickery's first!*



5 The Green, Drayton,  
Abingdon OX14 4JA  
Telephone 01235 531497

**Just park outside!**

**OPEN Monday to Saturday 9am to 5.30pm**

### The Railway Inn



11 room Bed & Breakfast 3 Star AA award

Pub open 12 to 10pm

Sunday Roasts 12 – 2.30pm

Please call to check for food times

Phone 01235 528046

Email: [info@railwayinnculham.co.uk](mailto:info@railwayinnculham.co.uk)

[www.railwayinnculham.co.uk](http://www.railwayinnculham.co.uk)

# WHO IS WHO IN CULHAM?

| <b>CULHAM PARISH COUNCIL</b>                              |  |   |                           |
|---|--|---|---------------------------|
| Philip Owen   | <a href="mailto:p.owen@culham-pc.gov.uk">p.owen@culham-pc.gov.uk</a>                       | 6, The Green, Culham  | 01235 555223              |
| Sam Casey-Rerhaye   | <a href="mailto:s.caseyrerhaye@culham-pc.gov.uk">s.caseyrerhaye@culham-pc.gov.uk</a>       | 3 The Burycroft, Culham   | 01235 635566              |
| Andrew Steele   | <a href="mailto:a.steele@culham-pc.gov.uk">a.steele@culham-pc.gov.uk</a>                   | 27 High Street, Culham  | 01235 534910              |
| Adrian Morris   | <a href="mailto:a.morris@culham-pc.gov.uk">a.morris@culham-pc.gov.uk</a>                   | 5, Manor Farm Barns, Culham   |                           |
| Siobhan Sargeant  |  | 3, High Street, Culham  | 07414 219803              |
| <b>CLERK TO PARISH COUNCIL</b>                            |  |   |                           |
| vacancy   | <a href="mailto:clerk@culham-pc.gov.uk">clerk@culham-pc.gov.uk</a>                         |   | 07731 435398              |
| <b>DISTRICT COUNCILLOR</b>                                |  |   |                           |
| Sam Casey-Rerhaye   | <a href="mailto:Sam.Casey-Rerhaye@southoxon.gov.uk">Sam.Casey-Rerhaye@southoxon.gov.uk</a> | 3 The Burycroft, Culham   | 01235 635566              |
| <b>COUNTY COUNCILLOR</b>                                  |  |   |                           |
| Robin Bennett   | <a href="mailto:robin.bennett@oxfordshire.gov.uk">robin.bennett@oxfordshire.gov.uk</a>     | 4 Meadside, Dorchester-on-Thames  | 07979 646815              |
| <b>ST PAUL'S CHURCH</b>                                   |  |   |                           |
| Associate Team Vicar:                                     | Rev Paul Wignall   | <a href="mailto:bridgegroupvicar@gmail.com">bridgegroupvicar@gmail.com</a><br>Dorchester Office: 01865 340007 | Vicarage:<br>01865 407848 |
| Ordained Local Minister                                   | Revd. David Haylett  | <a href="mailto:familyhaylett@yahoo.com">familyhaylett@yahoo.com</a>  | 01865 407382              |
| Hon. Treasurer:   | Andrew Churchill Stone   | <a href="mailto:churchillstone27@gmail.com">churchillstone27@gmail.com</a><br>21 High Street, Culham          | 01235 533011              |
| Churchwarden:   | vacancy  | <a href="mailto:stpaulsculham@gmail.com">stpaulsculham@gmail.com</a><br>14 The Glebe, Culham                  | 01235 537525              |
| Hon. Secretary:   | Ruth Ward  | <a href="mailto:stpaulsculham@gmail.com">stpaulsculham@gmail.com</a><br>5 Thame Lane, Culham                  |                           |
| <b>FRIENDS OF ST PAUL'S CHURCH</b>                        |  |   |                           |
| Chairman:   | Philip Owen  | 6 The Green, Culham   | 01235 555223              |
| <b>ST PAUL'S &amp; CULHAM VILLAGE RE-ORDERING COMMTEE</b> |  |   |                           |
| Philip Owen   | <a href="mailto:stpaulsandculhamvillage@gmail.com">stpaulsandculhamvillage@gmail.com</a>   | 6 The Green, Culham   | 01235 555223              |
| <b>LADIES OF CULHAM (LOC)</b>                             |  |   |                           |
| Laura Cooper  | <a href="mailto:ladiesofculham@gmail.com">ladiesofculham@gmail.com</a>                     | Also Jenny Williams, Jo Oughtred, Amy Sutcliffe   |                           |
| <b>POLICE</b>   |  |   |                           |
| Neighbourhood Policing Team                               |  | Non-emergency Phone Number  | 101                       |
| <b>THE MOUTHPIECE</b>                                     |  |   |                           |
|   |  | <a href="mailto:generalmouthpiece@gmail.com">generalmouthpiece@gmail.com</a>                                  |                           |
| Editors:  | Anne Churchill Stone   | 21 High Street, Culham  | 01235 533011              |
|   | Gordon & Joan Gibbs  | 32 High Street, Culham  | 01235 523679              |
| Advertising Manager:                                      | vacancy<br><a href="mailto:advertmouthpiece@gmail.com">advertmouthpiece@gmail.com</a>      | 14 High Street, Culham  |                           |
| Distribution:   | Maggie Graham<br><a href="mailto:maggieg30@gmail.com">maggieg30@gmail.com</a>              | 8 Tollgate Road, Culham   | 01235 525901              |