

The Mouthpiece

Culham's Newsletter

October 2021



Dates for your Diary

Sun 3 October	11am	Holy Communion	St Paul's Church
Thurs 8 October	8pm	Debrief re Culham Festival	The Swan, Sutton Courtenay
Sun 10 October	11am	Holy Communion	St Paul's Church
Tues 12 October	7.30pm	Parish Council meeting	St Paul's Church
Sun 17 October	11am	Messy Church	St Paul's Church
Tues 19 October	7.30pm	Sutton Courtenay W.I.	River Room, Sutton Courtenay
Sun 24 October	11am	Team Service	St Mary & St Berin, Berinsfield
Sun 31 October	tbc — please see FaceBook page for update.	Remembrance/Commemoration Service	St Paul's Church

From Rev. Paul Wignall and the Dorchester Abbey Team



Talking point

Autumn is now underway and harvest services across schools and churches have begun. Harvest is celebrated less than in previous generations – could this be linked to our disconnection with the agricultural environment that brings us our produce? Or perhaps many of us are still grateful for the produce we enjoy but would choose to express our thanks in other ways. By being fully present to this season, with its “mists and mellow fruitfulness”, by savouring it with all our senses – the freshness of cold air in our nostrils as we step outside and breathe deeply, the taste of blackberry and apple crumble, the beauty of the turning leaves - however we engage with this season we can honour it. As Brian Draper (author of *Soulful Nature: A spiritual field guide* with botanist Howard Green) recommends, may we “meet autumn’s imminent arrival with the kind of love we might show an old friend; or with the kindness we’d offer a stranger; or with the reverence we’d reserve for God.”

And as we contemplate and give thanks for nature and the environment here are 8 practical high-impact steps (in no particular order) we can take as individuals to care for the natural world and reduce climate change this autumn:

1. **Plant trees** in tropical rainforests (through [Treedom](#), we can choose the type of tree based on how much carbon it removes from the atmosphere). Or join the work of <https://internationaltreefoundation.org/> based in Oxford, planting trees in the UK and Africa. Reforestation could remove around two-thirds of human-made carbon.
2. **Create more sustainable transportation habits.** Think about
 - Lift-shares when travelling or using public transport
 - Avoiding rapid acceleration and braking
 - Walking and biking to our destination whenever possible
 - When buying a new car, choose a climate-friendly option
3. **Lower our heating bills** where possible by checking the thermostat and improving insulation and airtightness through walls, roof, and windows.
4. **Divest from coal and encourage others to do the same.** Check that our banks, insurers and others have agreed to divest and if not ask them to do so.
5. **Eat less beef.** Emissions from animal agriculture account for around 15% of all human emissions, and beef is responsible for 41% of that, according to the UN Food and Agriculture Organization.
6. **Educate girls**, by giving to a charity that makes school more affordable and accessible for girls in low- and lower-middle-income countries, such as the [Malala Fund](#). Women have a disproportionate share of decision making around water, cooking, food waste, fuel choices, and how homes are heated, built, and used.
7. **Advocate for a healthy planet** by supporting and lobbying for legislation, writing to our local councillors and MPs.
8. **Convince our friends to behave sustainably** – we are all motivated to do what those around us are doing!

Why not pick one of these during our autumn harvest season as a way of giving thanks and safeguarding our future? Enjoy!

Services – further information from your vicars

Most parishes are sending a weekly email with service information; if you want to receive this email – and for up to date information about services - please call the Team Office on 01865340007 or email admin@dorchester-abbey.org.uk

Team Events

3rd October 12noon in the Abbey A Special celebration for the Rector- everyone is invited!

I was ordained Deacon in Christ Church on 4th October 1995 and Priest at St Mary's Church Banbury on September 29th 1996 and so this year marks the 25th anniversary of my priestly orders. Last year my Deacon celebration fell on Bishop Colin's leaving service day so my celebrations were muted! Anyone who would like to celebrate with me is warmly invited to join me in the Abbey at NOON on 3rd October for a celebratory service followed by refreshments. Please let me know if you would like to join me! Please look for further details on the weekly email regarding refreshment arrangements – these will be along “bring and share – or eat your own” lines.

...and another bit of personal news from Dorchester Rectory. I will retire as Team Rector next January slightly earlier than the clergy retirement age of 70. I have hugely enjoyed being the Team Rector here and learning, laughing and loving alongside people in all the parishes. The current plan is that my final service will be on Sunday 9th January – the Feast of the Epiphany. Thank you for your friendship and support.

4th Sunday 24th Oct Berinsfield Birthday

Berinsfield Church is 60 this year and our Team Service will come from Berinsfield with a host of guests. Because of space restrictions this service will be zoomed to ensure that everyone who wishes to attend can do so and details about attending in person will be sent in the weekly email (see details above to register for this) when the amount of space available and current Covid precautionary situation are clear. We will be joined by a host of ‘old friends’ both on Zoom and in person!

Wed 13th Oct 7.30pm Filling Station Marsh Baldon Village Hall

We are planning a celebration for our return to Marsh Baldon Village Hall and our 6th birthday. Save this date and join us as we celebrate with food and wine, and praise and worship, giving thanks to God for many blessings, and seeking His face as we remember those we have lost since we last met together in person. Our speaker at this meeting will be James Nickols, our Filling Station regional coordinator, who was our speaker at the launch in October 2015.

Events in the Abbey

Sat 2nd Oct 8pm Music at St. Peters at Dorchester Abbey Handel: Alexander's Feast

with The Thames Consort Director Jeremy Boughton and soloists: Soprano: Lisa Gifford-Guy Tenor: Chris Fitzgerald-Lombard Bass: David Le Prevost. Tickets: £16 (free for under 25s) Tickets must be pre-booked online at www.musicatstpeterswallingford.org.uk or phone Jules on 07968 703079

Sat 9th Oct 7pm OSJ Concert Schumann Dichterliebe, Stanford and Liszt

Join Julien van Mellaerts and the Orchestra of St John's for the world premiere of Schumann's transfixing Dichterliebe, newly orchestrated by conductor John Lubbock, and enjoy gems from the choral repertoire by Bruckner, Stanford and Liszt, performed by the OSJ Oxford Voices Tickets £15 to £20 from www.osj.org.uk

Sat 6th Nov 7.30pm Rossini's *Petite Messe Solennelle* conducted by Richard Laing

Village News

Village website: www.culhamvillage.org.uk

St Paul's Church



Messy Church – **Sunday 17th October at 11am**



St Paul's and Culham Village

MEDITATION TASTER COURSE AT ST PAULS

Come and try out four different styles of meditation at St Pauls in October. We'll meet for an hour each week and you'll be led through a short 10-15 minute meditation which you can then try out at home. Each week will focus on a different type of meditation practice so hopefully you'll find something to suit you. You'll also receive advice on how to deal with common pitfalls and we'll trouble-shoot any specific problems you encounter. The sessions will be led by Sarah Chatwin who has had a meditation practice since 1979.

No sitting on the floor (unless you really want to)! We'll use chairs. Please bring a couple of cushions though so you can be comfortable.

Every Monday in October (4th, 11th, 18th, 25th) from 7-8pm

Sessions are 'pay what you can' by donation in aid of the Friends of St Pauls.

Culham Parish Council (CPC) notes – September 2021

Held at the church.

The reports from OCC and SODC councillors should appear elsewhere in the Mouthpiece and on the CPC website.

There will be increased use of the haul road to the hydro scheme in the next few months to allow repairs to the equipment. Neither the EA nor OCC highways have been forthcoming about the removal of the spoil heaps which have been in place for several years.

It was suggested that CPC should ask SODC to enforce the planning application to return the road to the tracked state originally agreed in the planning application.

A discussion on village grass cutting prompted CPC to contact the current grass cutting company to undertake the third cut within the village. (Post meeting note – the date had already been set by the company for the day following the CPC meeting). The council's main aim with the grass cutting is to maintain areas of bio-diversity and to encourage wild life and pollinators into the area. This is of course while maintaining the safety aspect of clear sight lines etc. This has been made more difficult this year due to prolonged wet and dry spells and, more recently, staff shortages at the contractors.

The Clerk's post remains open. A new advert offering extra hours (6 per week) and appropriately increased pay will be placed in the OALC newsletter.

A motion was passed to agree a maximum of £2000 towards the joint local council action against the siting of the HIF road (Didcot to Culham road and bridge). CPC will have to define the objectives of the challenge to the road, and the benefits for Culham, before actually allocating the money.

The Neighbourhood Plan Report group is making progress with the consultants (O'Neil's). The pre consultation draft is ready and will be formally submitted to CPC in October. The report then goes to SODC for pre-review then to referendum in Jan/Feb 2022. The plan will include a policy on the Waggon and Horses site. There will be a presentation at the next CPC meeting.

A village survey has been carried out regarding the planting of trees along the High Street and along the north end of Tollgate Road (east side). There has been generally positive feedback from the residents. Details of the trees and agreement from SODC (about planting along the High Street) will follow.

The setting up of a 'village gardening group' will be pursued by Councillor Siobhan Sargeant. Amongst other things it will deal with maintaining the growth around the proposed white gates at the entrances to the village. These are likely to be installed in Spring of 2022.

The bus stop outside the old Lion pub is considered to be a 'timed stop' by Thames Travel. Thus, buses may stop there for several minutes to maintain their schedule. CPC will ask Thames Travel to move this timed stop, as it is potentially dangerous being close to the corner of High Street and Burycroft.

Next meeting

12th October 2021 at 19:30 – to be held in the Church.

As ever all villagers are welcome to attend - please come along even if you have no specific items to present/discuss.

Village website address:

<https://www.culhamvillage.org.uk/>

The CPC website address:

<https://www.culham-pc.gov.uk/>

Plea for help!

Do you have IT skills that could help Culham Parish Council? The council is looking for someone to maintain the CPC **website, and the email system**. This will include posting notices, agendas, and minutes of the meetings. If you think you could help, please contact any Parish Councillor or (acting) Clerk – see the Mouthpiece back page for details.

Thank you

Culham Parish Council

Culham Volunteers Gardening Group

We are looking for local residents who can give once a month support with clearing paths around Culham, bulb planting, mowing, and keeping hedges back that affect a lot of paths on our busy roads.

We're aiming for one Sunday morning monthly with a 10am start, to meet on the green with pruners, spades, shears at the ready to work in groups.

This is also a great opportunity to meet others in the village. A bit of a 'social calendar' occasion that we hope will form a close community that really matters now, more than ever.

If you are interested, please contact Siobhan Sargeant at 3, High Street.

Thank you

CULHAM PARISH COUNCIL - Vacancy for Parish Clerk and Responsible Financial Officer

Location: Home (required to attend Parish Council meetings)

Hours: 6 per week

£ salary (range) & other key benefits

Commensurate with Experience (LC1, SCP 13-17) £11.76 - £12.73 per hour

The Clerk will support the Parish Councillors, provide guidance on compliance and legal matters, and manage the administrative and clerical functions of the Council. As the Responsible Financial Officer, he / she will manage the Parish Council's finances. A laptop and printer are provided.

Duties include:

- Supporting the chair by preparing agendas, taking minutes, noting decisions, follow ups and actions forward.
- Tabling planning notices for discussion and dealing with the District Council.
- Managing the finances of the Parish Council including preparing accounts, financial reports, controlling the Bank account, paying invoices, dealing with HMRC (VAT & PAYE), arranging insurance and audits, and overseeing the annual budget review and precept submissions
- Advising councillors on their statutory duties and that of the Council
- Supporting general village communications and website uploads.
- Maintain a document repository for access by Parish Councillors.
- Dealing with general correspondence and public notices.
- Administering the burial ground

Council meetings take place in the evening on a monthly basis, except in August where no meeting takes place.

Person Specification

Candidates must possess good attention to detail, have good communication skills (written and verbal), and have a good working knowledge of IT systems. Candidates should have a proven understanding, or a willingness to engage in training to gain an understanding, of local government processes and remits. On-going training will be expected as necessary.

This is a varied and interesting position. Working part-time and largely on your own initiative, you will have the necessary flexibility to deliver high-quality responsive support to a new team of energetic Parish Councillors and enable them to deliver added value benefits for the village community.

How to apply: For further information, an informal chat or to receive an Application Form to apply for the position, please contact the Chair Sam Casey-Rerhaye by email s.caseyrerhaye@culham-pc.gov.uk

Deadline 6th October 5pm

Interview date: Week commencing 18th October

Culham Festival

We're having a Culham Festival debriefing on Thurs Oct 7th at 8pm.

Please come to The Swan in Sutton Courtenay with your ideas, concerns and hopes for the next festival. We hope to set a date for next year at the meeting. Hope to see some of you there - we welcome your input.

URGENT MESSAGE FROM SAVE CULHAM GREEN BELT

RE: THE OXFORDSHIRE PLAN 2050

I know we are all very battle-weary, but I am asking those who can summon the strength to respond to the current consultation on the *Oxfordshire Plan 2050* (OP2050) – and soon, **as the deadline is 8 October**.

I am concerned that, understandably, there is no real understanding of the enormity of the potential development planned for the next 30 years, **on top of the 78,000 houses already planned in the various Local Plans**, including the 3,500 in Culham, nor the possibility that our share could be much more.

As per the information in last month's *Mouthpiece*, the OP2050 will focus on the strategic planning issues relevant to the whole of Oxfordshire.

- It will sit alongside adopted Local Plans and Neighbourhood Development Plans.
- It will provide the framework for new Local Plans and Neighbourhood Development Plans.
- It will be used to help make decisions on planning applications.
- It will identify broad locations for new development. It will be up to local plans to identify specific development sites within this framework.
- It will plan for the next 30 years, up to 2050. This is double the length of normal Local Plans.

The full document and information including webinars is available at: www.oxfordshireopenthought.org

SUMMARY OF POLICIES OF CONCERN (i.e. to object to):

HOUSE NUMBERS (Policy Option 28 (pp 126-131))

OP 2050 are presenting three options, all of which accelerate housing and population growth:

1. 'Standard Method' : 102,000 houses (i.e a further 24,000 on top of Local Plans)
2. 'Business as Usual' : 123,000 houses (this is using the inflated figures of the Growth Deal, and means a further 45,000)
3. 'Transformational' : 153,000 houses (this would mean 75,000 extra houses!)

To illustrate this more visually NNGO statisticians have worked out that this would mean new settlements the equivalent to a second Abingdon, Banbury, Bicester, Witney, Wantage and a second Oxford – by 2050.

ALL these options exceed the Office of National Statistics (ONS) projection which states that we only need 53,000 more houses between now and 2050 so we already have more than enough houses in our plans. Growth on this scale can only come by attracting far more people to live in Oxfordshire than has happened in the past – every year for 30 years.

I attach the admirably clear NNGO flyer. They argue that:

- the need is not for more housing but more affordable housing
- focusing so much development in the SE between Oxfordshire and Cambridge makes a mockery of the Government's pledge to 'level up' the rest of the country.
- development on this scale will make a zero carbon, green and sustainable future impossible for Oxfordshire.
- to prevent our environment from being damaged by the excessive growth that is planned the total housing requirement should be set at the lowest possible figure and preferably even lower than the Option 1 Standard Method, with more organic growth based on ONS natural population growth numbers

DEVELOPMENT LOCATION OPTIONS (Spatial Strategy Options pp 142-164 – see especially page 150 where CULHAM is listed as ‘larger settlement’)

OP2050 is consulting on 5 broad options:

Option 1: Focus on opportunities at larger settlements and planned growth locations

Option 2: Focus on Oxford-led growth

Option 3: Focus on opportunities in sustainable transport corridors and at strategic transport hubs

Option 4: Focus on strengthening business locations

Option 5: Focus on supporting rural communities

The Campaign for the Protection of Rural England (CPRE Oxfordshire argue the same as above on numbers but on location are advocating: **“a focus on Spatial Option 1 (growth at existing planned locations)’ prioritising ‘effective use of land already released for development’ so that ‘no further new major sites are required’.** **THIS IS OF GREAT CONCERN FOR SITES SUCH AS CULHAM which is listed as one of South’s larger settlements.**

In their longer response CPRE do qualify this by saying that ‘some locations would struggle to accommodate any further growth without serious detrimental impact to the countryside and there certainly should not be any further Green Belt release’ but I am concerned that many will just understand the first statement. **Please say in your response that no single option is sustainable and that the Culham site could not take any more than the current LP2035 allocates, which is already a new town the size of Wallingford, swamping our small rural village of just 170 existing houses.**

As Bioabundance says: “responding to the climate and nature emergencies is not compatible with concreting over our land. The citizens of an environmentally burnt-out, flooded and urbanised Oxfordshire in 2050 will not thank us for making this mistake’.

So PLEASE RESPOND TO THE CONSULTATION by 8 October latest

AND please also let our DISTRICT COUNCILLOR, Sam Casey-Rerhaye , know of your concerns. We hope that she can work together with other elected district councillors, and other parish councils, to prevent the continued destruction of the environment in Culham and other affected villages in Oxfordshire: Sam.casey-rerhaye@southoxon.gov.uk

.....

WAYS TO RESPOND

- register and go through the tedious survey responding to the orange button on each page

OR (easier):

- fill out the OP2050 form

And either email this or your personal response to: info@oxfordhireplan.org

or post a response to Oxfordshire Plan 2050, Speedwell House, Speedwell St, Oxford OX1 1NE.

DEADLINE is: Friday 8 October.

NOTE: the policy on housing numbers is ‘Policy Option 28’. The policy on WHERE is ‘Spatial Option 1’.

.....

What future do we want? The Oxfordshire 2050 Plan?

NEED
not
GREED
OXON

The Oxfordshire 2050 Plan (OP) will set the broad scale and pattern of future development in Oxfordshire from 2020 to 2050. **Need Not Greed Oxfordshire** (NNGO) believes the plan proposes excessive growth. If this plan is accepted it will be impossible for Oxfordshire to meet zero carbon commitments and would be detrimental to the environment and biodiversity.

Details: www.oxfordshireopenthought.org

The Oxfordshire Plan 2050 consultation proposes 3 different growth options:

1 Standard Method

102,000 houses – 1 new house for every 3 we have now

2 Business as Usual*

123,000 houses – far above existing growth rates; and

3 Transformational

153,000 houses – 1 new house for every 2 we have now

*Actually not 'as usual' but continuing the inflated figures of the Oxfordshire Housing and Growth Deal

Over 78,000 houses are already included in local plans for Oxfordshire. The Office for National Statistics (ONS) projection states that we only need 53,000 more houses between now and 2050. So, we already have more than enough houses in our plans.

Growth on this scale can only come by attracting far more people to live in Oxfordshire than has happened in the past – every year for 30 years.

The **'Standard'** option assumes twice as much growth as the official ONS figure. The **'Transformational'** option has three times as much.

The **'Transformational'** option means we would have to build new settlements as large as Banbury, Abingdon, Bicester, Wantage, Witney AND the whole of Oxford, by 2050.

The Plan says that even at the lowest growth, *'negative effects are expected on all environmental factors: water, flooding, soils, biodiversity, landscape and heritage. Car traffic is also likely to [will] increase with associated climate change and air pollution impacts [and congestion]'*.

This Plan is driven by the government's aspiration to create thousands of additional jobs in the county, changing much of our green landscape to concrete in order to accommodate the new businesses, houses and infrastructure that would be required.

This is the opposite of the government pledge to level up the UK and will not make house prices more affordable, as our Prime Minister, Boris Johnson, made clear in his recent 'Level Up' speech: *"by turbo charging ... London and the South East – you drive prices even higher ..."*

Need Not Greed thinks that all these options are excessive and that:

- the need is not for more housing, but for more affordable housing;
- focusing so much development in the South East between Oxfordshire and Cambridge will make 'levelling up' the rest of the country impossible; and
- development on this scale will make a zero carbon, green and sustainable future for Oxfordshire impossible.



This is important! Make your voice heard. Reply to the consultation by 8 October at:
www.oxfordshireopenthought.org



Check out the NNGO website for further information including a template response email
www.neednotgreedoxon.org.uk



And let your Councillors and MP know that you do not agree with the options presented. Find out who to contact here:
www.writetothem.com

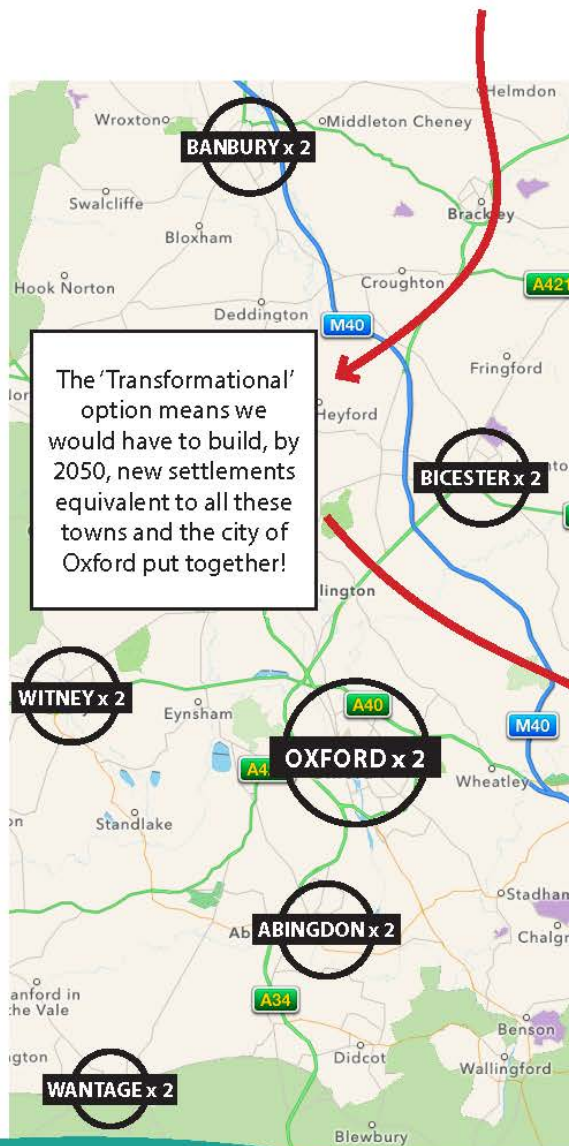
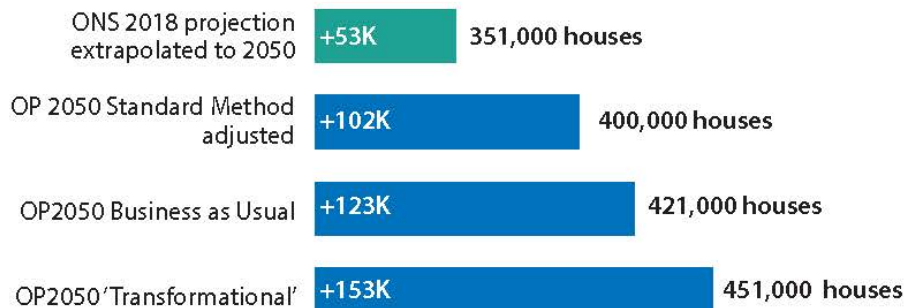
NEED not GREED OXFORDSHIRE

Find out more: www.neednotgreedoxon.org.uk

This is what the Oxfordshire Plan 2050 could look like!

NGOs believe all the proposed growth options in the Plan are excessive. There were 298,000 houses in Oxfordshire in 2020. This bar chart shows the additional houses that the ONS predicts we should build by 2050, and the excessive Oxfordshire Plan (OP) proposals.

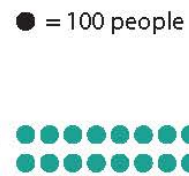
Oxfordshire housing stock at 2020 = 298,000



This is not about meeting local need

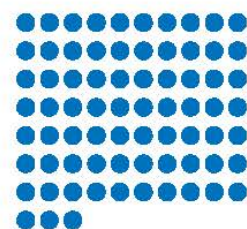
Net in-migration to Oxfordshire would have to increase dramatically in order to achieve these figures.

Average in-migration over the last 18 years = 1,900 per annum.

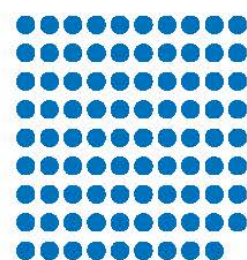


The proposed growth scenarios would need the following:

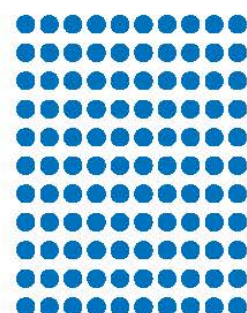
Standard method – 7,300pa (286% increase)



Business as usual – 8,900pa (369% increase)



Transformational – 11,000pa (480% increase)



As well as putting intense pressure on Oxfordshire's environment and rural character, such a movement of people is likely to have a severe impact on the Government's levelling up agenda and would be to the detriment of other parts of the UK.



Make your voice heard. Reply to the consultation by 8 October at: www.oxfordshireopenthought.org

District Councillor's Report September 2021

- Sam Casey-Rerhaye

Covid-19 Rates

Numbers of people infected are rising again, and this includes in those over 60. Please remember to test regularly with the Lateral Flow Tests (LFT) and if you feel unwell, get a PCR test. You can get free LFT from certain pharmacies and from test centres or you can order them online. It is recommended that people take a LFT twice weekly.

Better Leisure help with vaccine uptake

The company that provides leisure facilities in our District, Better, have been invited to join Public Health England's drive to boost the uptake of the Covid-19 vaccination among young people. Better is the only leisure operator in the country to be involved in the initiative and joins other businesses across to have pledged their support for the UK's vaccination programme, by offering incentives to vaccinated customers. They are offering anyone between 16-30 years old a £10 voucher to be used against any membership at a Better-operated leisure facility and a three-day free pass to any of its leisure centres or gyms.

In order to take up the offer, local residents need to complete the form available on the Better website <https://www.better.org.uk/healthy-communities> and follow the simple instructions. Customers will need to present their vaccination card or alternative proof on their first visit to their local Better leisure centre or gym.

Garden Waste Collections Suspended

At the time of writing, in mid-September, the garden waste collections are still suspended. I completely understand the frustration this has caused, in summer when many people have more garden waste than any other time. It was the only option however considering the shortage of HGV drivers. There is a contingency built into the service agreement with residents, which is that the guaranteed number of collections paid for over a year is 20, and normally there are about 26 collections each year, so at the moment no refunds need to be offered. I hope that by the time you have read this, collections will have re-started but with the HGV driver shortage being so acute, we may have to make further changes. I will keep you updated as quickly as I can.

Oxfordshire 2050 Spatial Plan

This consultation, the 'Reg 18' stage, can be found at [Oxfordshire Plan 2050 - Planning together for a better Oxfordshire](#). Webinars have been held to help explain the Plan and can be viewed on the website too. This Plan is for the whole of Oxfordshire and we at South Oxfordshire have had a big influence on it, with climate concerns, changes in infrastructure and resident well-being having a high priority.

However, frustratingly, the number of new houses that Councils are obliged to provide is still dictated by government - this is the minimum number option in the Plan. Options with higher numbers are also in there and residents are being asked to give their view on what they think would be best for the County.

Evidence shows that building thousands of new houses does not bring prices down while there are existing other drivers pushing them up, so the reason for building more new homes in our District is for economic growth in an area with a very tight labour market.

But to achieve our Paris 2015 commitments and reading the latest Intergovernmental Panel on Climate Change report, there are many activities which we need to stop or slow down considerably, so continuing along the same economic growth trajectory will not get us where we need to be. Let's continue to push this message, and if you can respond to this consultation, I would urge you to do so. I will be responding with some simple statements that the transition to a just and fair carbon zero (or better still carbon negative) economy needs to take precedence over any other objective.

Council's support for refugees from Afghanistan

District Council officers are working closely with those from councils across Oxfordshire to address the needs of the individuals and families arriving in the UK from Afghanistan. The County Council is collectively leading on co-ordination of the support offered, including co-ordination with any voluntary sector agencies in Oxfordshire. We have made clear via the South East Migration partnership that we stand ready to provide accommodation if needed. Thank you very much to everyone who has made donations for the refugees fleeing Afghanistan – at the moment no further donations are needed. If residents would like to help now there are national charities that offer support or if a more locally based charity is sought, existing voluntary organisations include Asylum Welcome in Oxford, who work extensively with the councils or Care 4 Calais in Reading.

Update on the Women's Tour cycling event

The women's cycling race will be coming through Oxfordshire on Monday 4 October. It will start in Bicester around 10.45am and will pass through Woodeaton just after 11.20am. It will then travel through Oxford before re-entering South Oxfordshire via Watlington Road from 11.40am. **Riders will then travel through the Baldons, Clifton Hampden and by Culham Science Centre before entering the Vale of White Horse just after midday via Abingdon Bridge.** They will then travel north, leaving the town via Wootton Road, and will proceed on via Whitecross and Farmoor before exiting the district just before 1pm via Swinford Toll Bridge. To ensure the safety of competitors and the public, rolling road closures will be in place during the event and there will be no parking on the route on race day until after all riders have passed. More information at southoxon.gov.uk/womenstour

Eco-Business Fair in Henley

The Economic Development Team in the Council organised this fair held on 22nd September. The objective was to offer support and ideas to businesses to reduce carbon and carbon-equivalent emissions, part of our strategy to achieve our district carbon targets.

Biodiversity 'net gain' in building developments

The District Council is supporting the Habitat Banking Pilot Scheme run in a partnership including four Wildlife Trusts – Berks Bucks and Oxon, Warwickshire, Cheshire, and Surrey Wildlife Trusts - and the environmental impact investment advisors Finance Earth. Habitat Banking is designed to address developers' need to deliver biodiversity net gain, which will soon be made law through the Environment Bill. The scheme enables habitats to be created or restored before any biodiversity loss is caused by developments, and this funding will enable the partnership to create three pilot habitat bank sites in Oxfordshire, Warwickshire, and Cheshire over the next year.

The District Council has also been involved in the first of a series of workshops run by the Healthy Ecosystem Restoration in Oxfordshire (HERO) programme. HERO is a three-year programme supported by the Oxford Martin School. It will explore how Oxford University can play a role in efforts to restore healthy ecosystems in Oxfordshire, by bringing the university's strengths in academic knowledge, research capacity and convening power to support ongoing and planned nature recovery activities by local partners and stakeholders.

You can find out more about HERO on the following website <https://www.biodiversity.ox.ac.uk/hero/>

Tree Planting policy on District council-owned land

The council's draft Tree Planting Policy and Guide is almost ready for organisations to apply to the council to plant trees on Council -owned land, should be in time for the tree-planting season from Nov-Feb. This is for all organisations who want to plant trees on Council-owned land, ensuring the trees are the right ones in the right place etc and that they are safely looked after so they thrive. There will be a form to fill in and it will be available on the SODC website.

Future Oxfordshire Partnership

The group that used to be the 'Oxfordshire Growth Board' has changed its name to the Future Oxfordshire Partnership to reflect the changed priorities of some of the councils on it. The Partnership also now has an Environment sub-group to work on climate and ecological priorities across Oxfordshire and will work closely with the new Oxfordshire Nature Partnership too.

Council Tax – Single Person Discount

Please ensure you are registered for the correct Council Tax rate. If you are no longer living in a single person household or have recently started to live in a single person household, please update your details:

sodc.counciltax@secure.capita.co.uk / 0345 302 2313

As ever, contact me if you need help on any District matters:

Sam.casey-rerhaye@southoxon.gov.uk

01235 799489



SUTTON COURTENAY WI



THIS YEAR

We've celebrated 100 years of SCWI



- achievement, education, friendship - and much more

In October we'll welcome autumn with a tasty Harvest Supper,

and in November Paul Dalby will show us how he carves

some wonderful wooden ducks

We meet every third Tuesday, monthly in the

River Room, Sutton Courtenay at 7.30 pm

if you wish to join us, please contact our Secretary on 847612




Other News

SIMNETT & STAINES
PRESENT

A CONCERT PRESENTATION OF A NEW MUSICAL

NIGHT FLIGHT

WITH AN
ALL-STAR WEST END CAST



ST. ANDREW'S CHURCH, OXFORD Linton Road, OX2 6UG
SATURDAY 2 OCTOBER at 8PM
Tickets from £20* from 0333 666 3366
www.TicketSource.co.uk/Night-Flight (* fees apply)

NIGHT FLIGHT

THERE IS ALWAYS A PRICE...

ARGENTINA, 1929
The world is on the brink of great change – the Argentine tango gives way to the strains of the new jazz sound, the world stands on the precipice of economic collapse, and the race is on to connect all peoples of the world through the advent of airmail.

The *Aéropostale* company has revolutionised our world, by providing a continuous airmail route from the southern tip of Latin America into the heart of Europe.

The planes race ahead of the sea and rail alternatives as the company's director, the great Rivière, takes the controversial and dangerous decision to fly through the night.

Despite pressure from his board, he ploughs on in pursuit of his grand vision, until one night Rivière is forced to confront that all great leaps forward come at a very real human cost.

NIGHT FLIGHT is a thrilling new musical adaptation of a novel by the legendary French writer and aviator Antoine de Saint-Exupéry (author of *The Little Prince*).

This one-night-only concert presentation, featuring an outstanding West End cast, is the première live performance of this exciting new show.

Music by LUKE SIMNETT
Book & Lyrics by DAVID STAINES
Adapted from the novel 'Vol de Nuit' by ANTOINE DE SAINT-EXUPÉRY

TICKETS ON SALE NOW!
0333 666 3366
www.TicketSource.co.uk/Night-Flight

PETER KARRIE
"The World's Favourite Phantom"

ADAM STONE
Band of Brothers – HBO

TOMAS WOLSTENHOLME
One – West End

KELLY HAMPSON
School of Rock – West End

KANE MATTHEWS
Motion – UK Tour

NADIA EIDE
The Voice UK 2021 semi-finalist

KATY TREHARNE
Christine, The Phantom of the Opera – West End

KELLY MATHIESON
Christine, The Phantom of the Opera – West End

DAVID BURROWS
Half a Sixpence – West End

KRIS MANUEL
Matilda – West End

KAOS Presents

20th - 23rd Oct

Gilbert & Sullivan's

H.M.S. PINAFORTE

PENSIONER

A new musical play,
bringing a modern twist to a much loved classic

20th-23rd October
7.30pm (doors 7pm)
Gosford Hill School
Kidlington OX5 2NT

Tickets £13/£8
Online: - www.kaos.news
In Person: - Alison's Animals
- Anemone Florists
- Oxford Building Supplies
Call: - 01865 375613
Email: - boxoffice@kaos.news

www.kaos.news

Registered Charity No. 1170572

HMS Pensioner

The show is set in a modern-day Ex-Naval/Admiralty Retirement Home. The Royal Naval Benevolent Trust has dedicated homes for members of the Royal Navy family. The Trust was first established as the Grand Fleet Fund by Admiral Jellicoe in 1915.

The cast are residents, carers, staff and day visitors at PEMBROKE HOUSE in the South East of England in Gillingham, which opened in 1952. Those who served in the Navy – Officers, Sailors, Marines, their dependents and administration – now come together to reside in a home established to provide care and support for the nation's naval veterans.

Funds need to be raised and **HMS Pensioner** was consequently born.....

The Abbey Cinema

boxoffice@theabbey.ac

www.theabbey.ac

07957 384158

On in October:

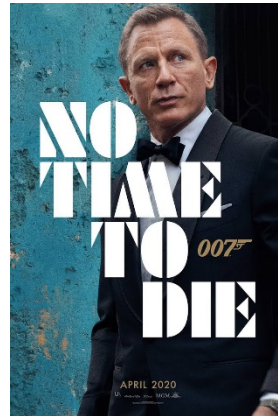
“No Time To Die”

1st to 14th Oct

Fri & Sat 13:00 17:00 21:00,

Sun 12:00 16:00 20:00

Mon – Thurs 19:30 plus an afternoon showing



“Cliff Richard the Great 80 Tour”

Wed 27th Oct 19:45

Sat 30th Oct 14:30

The cinema team also take bookings for rooms at Guildhall for your own event or meetings.

The Mouthpiece

Please note that any opinions expressed in this newsletter are those of the contributors and not necessarily those of the editors. We accept contributions and advertisements in good faith and cannot be responsible for errors therein.

Please send contributions for the November issue of the Mouthpiece by October 15th to:

generalmouthpiece@gmail.com

Anne Churchill Stone <i>Editing Jul/Aug, Oct, Dec/Jan, Mar issues</i>	21 High Street Culham
Gordon & Joan Gibbs <i>Editing Jun, Sep, Nov, Feb, Apr issues</i>	32 High Street, Culham

Printed (at a discounted rate) by Culham Publication Services, Culham Science Centre, OX14 3DB



www.culhamstudio.co.uk

stuart.morris@ukaea.uk 01235 464904

Local Services Directory

<div>Larkmead VETS</div> <div></div> <div><i>Caring for Pets, Horses & Farm Animal throughout South Oxfordshire</i></div> <div>Didcot & Sutton Courtenay 01235 814991 Cholsey & Benson 01491 651379 Horses & Farm Animals 01491 651379</div> <div>www.larkmead.co.uk</div> <div></div>	<p>Excellent operating facilities, including orthopaedic surgery.</p> <p>Extended surgeries, and regular Cat Only clinics available.</p> <p>Appointments available Saturday and Sunday.</p> <p>24-hr emergency care, 365 days a year.</p> <p>Larkmead Vets cover all emergencies; we do not use outside agencies.</p>	
--	---	---

Milton Garden Machinery Ltd

Don't Mown at the Mower!

Garden machinery winter servicing

Please call or Email for a quotation.

Established for over 30 years.

We repair all types of petrol driven machinery.
Main dealers for: Alko, Briggs Stratton, Countax, Cub
Cadet, Echo, Efco, Hayter, Lawnflite, Mitox, MTD,
Murray, Toro, Westwood, Wheelhorse. We repair
Stihl and Honda machines too

15% discount in Oct – Nov, 10% discount in Dec,
5% discount in Jan on all parts and labour.

Collection & Delivery Service available

Windyridge Farm, Milton Road,
Abingdon OX14 4EZ

Tel: 01235 555115

Email:

paul@miltongardenmachinery.co.uk

www.miltongardenmachinery.co.uk



Bouncy Castle

Available for hire

£40 per day/ £65 per weekend

(Hirer to collect and return to Culham)

Contact Roy Epps stpaulsandculhamvillage@gmail.com





CHANGES

unisex hair salon

open Tuesday - Saturday

late nights Wednesday & Friday

open all day Saturday

discount for senior citizens Tuesday & Wednesday

free off road parking

For a professional but friendly service phone

01235848453 or call in and see us at

8 Milton Road, Sutton Courtenay

Shaun Guard TV & WIFI SERVICES

- Aerials - supplied, repaired & poor reception solved
- Satellite - Sky Q dish upgrades, discreet dish installations, foreign TV
- Internet - blackspots cured, data cables to your TVs / computer
- TVs - hung on your wall or set up and tuned
- CCTV & Door Entry - domestic installations



OXFORD AERIALS

www.oxfordaerials.co.uk

Call Abingdon 01235 239622

Cupcake Baker

Reasons to be cheerful!

Cupcakes, French macaroons and celebration cakes.

Weddings, birthdays, parties and corporate orders.

www.cupcakebaker.co.uk mail@cupcakebaker.co.uk

6 High Street, Culham. 01235 533370

**Supplier to Raymond Blanc's Two Michelin Star
restaurant and hotel *Belmond Le Manoir aux Quat' Saisons*.**



Richard Mathews Florist

01235 847 194

Order online via our new website

www.richardmathewsflorist.co.uk

V A L E



CURTAINS & BLINDS

Bespoke Made to Measure

Free Expert Advice

Friendly Family run Business

Call: 01235 758010

Email: enquiries@valecurtainsandblinds.co.uk

www.abingdonblinds.co.uk



Tonks Brothers Funeral Directors

ABINGDON & KENNINGTON

*158 Ock Street, Abingdon OX14 5DT Tel
01235 539444*

*166 Kennington Rd, Kennington OX1 5PG Tel
01865 736144*

www.tonksbrothers.com

“Proud to be a family business”



MOBILE BEAUTY THERAPY
Abingdon & surrounding areas in South Oxfordshire

*Monday to Friday: 2PM to 9PM
Saturday & Sunday: 9AM to 6PM*

www.bbbeautytherapy.com
bbbeautytherapist@gmail.com
07842 181593

20% OFF YOUR FIRST BOOKING

Jessica Manicures • Margaret Dabbs Pedicures
Shellac • Organic Pharmacy Facials
LVL Lashes • Lash & Brow Care
Neom Organics Massage



Culham
Garden Services

Local, Reliable and Professional

Available for all aspects of garden maintenance and
clearance

Seasoned logs and kindling for sale

07857383069

James@culhamgardenservices.co.uk
Regular and one-off services available
Public Liability Insured Lawn treatment service

James Rockall
13 High Street
Culham
OX14 4NB

The Oxford Window Repair Company

The wooden window specialists

- Flaking paint and cracked putty on your windows?

We specialise in repair and renovation to give your windows a new lease of life!

We use the latest wood treatments and high-performance fillers, combined with modern
& traditional paint solutions to give an excellent finish

Maintenance contracts are also available for your peace of mind

- All work guaranteed

Call us for your free estimate 07880 560 403

www.oxfordwindowrepair.com

DIRTY CARPETS, UPHOLSTERY, RUGS



Most carpets dry within the hour

**Unbeatable results, removes almost
all spots & stains**

GRIMEBUSTERS

**OXFORD
ABINGDON
WITNEY**

**01865 726983
01235 555533
01993 868924**

www.grimebusters.co.uk

A.L.VICKERY AND SON

Hardware and much more!

**Keys Cut while you wait,
cookshop, housewares,
tools, gardening...**

...you'll save money, time
and mileage when you try

Vickery's first!



5 The Green, Drayton,
Abingdon OX14 4JA
Telephone 01235 531497
Just park outside!

OPEN Monday to Saturday 9am to 5.30pm

WELCOME TO

THE RAILWAY INN

ARRIVE EARLY. LEAVE LATE

01235 528046 INFO@RAILWAYINNCULHAM.CO.UK

**The Railway Inn
Station Road
Culham**

OX14 3BT

**Pauline and Roy
Tel 01235 528046**

**Restaurant -
12-2pm & 5-8.30pm
Bar - 12noon-10pm**

**Sunday Roasts
12noon - 2.30pm
no food served Saturday
lunchtime or Sunday evening**

11 room accommodation

join us at www.railwayinnculham.co.uk to
view our events, menus and meal deals

WHO IS WHO IN CULHAM?

CULHAM PARISH COUNCIL			
Sam Casey-Rerhaye (Chair)	scaseyrerhaye@culham-pc.gov.uk	3 The Burycroft, Culham	01235 799489
Andrew Steele	a.steele@culham-pc.gov.uk	27 High Street, Culham	01235 534910
Adrian Morris	a.morris@culham-pc.gov.uk	5, Manor Farm Barns, Culham	
Philip Owen	p.owen@culham-pc.gov.uk	6, The Green, Culham	01235 555223
Siobhan Sargeant	s.sargeant@culham-pc.gov.uk	3, High Street, Culham	
CLERK TO PARISH COUNCIL			
J Denn	clerk@culham-pc.gov.uk		
DISTRICT COUNCILLOR			
Sam Casey-Rerhaye	Sam.Casey-Rerhaye@southoxon.gov.uk	3 The Burycroft, Culham	01235 799489
COUNTY COUNCILLOR			
Robin Bennett	Robin.bennett@oxfordshire.gov.uk	4 Meadside, Dorchester-on-Thames	07979 646815
ST PAUL'S CHURCH			
Associate Team Vicar:	Rev Paul Wignall	bridgegroupvicar@gmail.com Dorchester Office: 01865 340007	Vicarage: 01865 407848
Ordained Local Minister	Revd. David Haylett	familyhaylett@yahoo.com	01865 407382
Hon. Treasurer:	Andrew Churchill Stone	churchillstone27@gmail.com 21 High Street, Culham	01235 533011
Churchwarden:	Roy Epps	stpaulsculham@gmail.com 14 The Glebe, Culham	01235 537525
Hon. Secretary:	Ruth Ward	stpaulsculham@gmail.com 5 Thame Lane, Culham	
FRIENDS OF ST PAUL'S CHURCH			
Chairman:	Philip Owen	6 The Green, Culham	01235 555223
ST PAUL'S & CULHAM VILLAGE RE-ORDERING COMMTEE			
Philip Owen	stpaulsandculhamvillage@gmail.com	6 The Green, Culham	01235 555223
LADIES OF CULHAM (LOC)			
Mary Rickford	mary@therickfords.com	The Clock House, Culham	01235 528052
POLICE			
Neighbourhood Policing Team		Non-emergency Phone Number	101
THE MOUTHPIECE	generalmouthpiece@gmail.com		
Editors:	Anne Churchill Stone	21 High Street, Culham	01235 533011
	Gordon & Joan Gibbs	32 High Street, Culham	01235 523679
Advertising Manager:	Georgie Bartley	14 High Street, Culham	
	advertmouthpiece@gmail.com		
Distribution:	Maggie Graham	8 Tollgate Road, Culham	01235 525901
	maggieg30@gmail.com		